

PM-212-MPO Pocket optical power meter USB probe

Description:

The PM-212-MPO optical power meter is a small, pocket size low cost item. The small size does not prevent the optical meter fulfilling all technical requirements for field equipment. The tester can be used as pocket power meter or as USB probe, part of testing workstation. The unit can be easily carried in the pocket or on the belt.

There are two versions for simultaneous measurement:

12/24 multifiber MPO/MTP connectors

16/32 multifiber MPO/MTP connectors

The Li-Pol rechargeable battery ensures long term working time with a minimum life time of 2 years. The unit is able to store 100 measurements which can be uploaded to PC and managed with SmartProtocol software or Data Exporter.



Features:

- Two functions:
 - - Portable power meter
 - - USB probe - accessory of Testing Workplace
- MPO/MTP connector: 12/24 or 16/32 fibers
- Multimode applications
- Small size, light weight
- Absolute and Relative optical power measurement
- Internal two level memory structure
- Capacity up to 100 measurements
- SmartProtocol SW - test reports creating
- Data Exporter - data download to Excel sheet
- USB port for:
 - - USB probe - full control via simple commands charging the battery
 - - data upload to PC
 - - firmware upgrade
- Build-in Li-Pol rechargeable battery pack
- Auto Off, battery status indicator

Specifications:

Photo detector	MM - large-scale Si	
Working wavelengths	MM 850 nm	
Uncertainty	± 5% (@ -27 to +20 dBm) ± 10%(@ -30 to -27 dBm)	850 nm @ -10 dBm
Resolution	0.01	
Dynamic range	-30 dBm to +20 dBm	850 nm

Dimensions	24 x 47 x 71 mm	including MTP/MPO adapter
Weight	Less than 90 g	battery loaded
Temperature operating Temperature storage Humidity (non cond.)	-10 to +50 °C -40 to +70 °C 0 - 95%	
Operating temperature	-10 to +50 °C	
Battery working time	> 35 hrs	between battery charging
Battery life time	> 2 years	

Standard accessories:

- Power meter
- MPO/MTP input adapter
- Power charging adapter
- Traceable calibration certificate
- Soft carrying case
- USB cable
- SmartProtocol SW

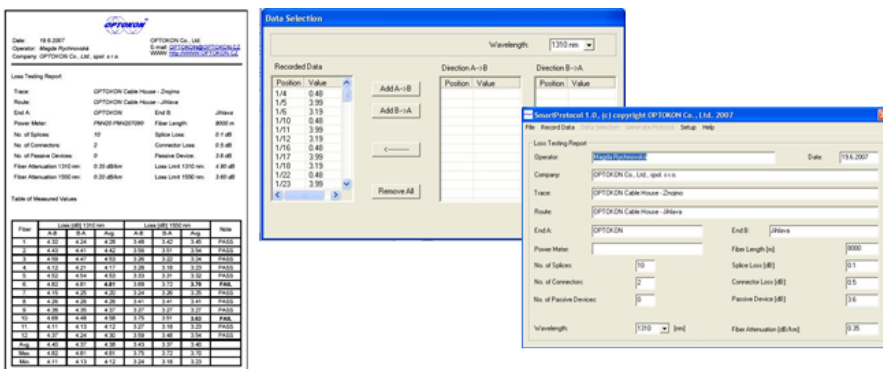
Optional

- Hybrid Master MTP patchcord
- Hard carry case (TE-HC-01)



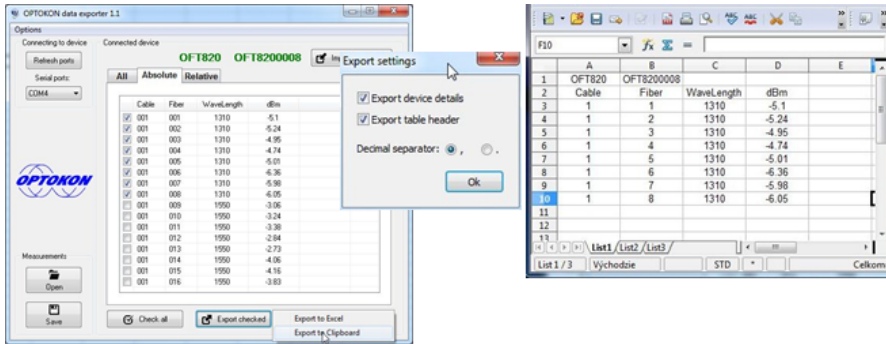
Note: 1) Hybrid MPO patchcord on request, please define connector type

SmartProtocol compatible



The image displays three overlapping screenshots of the SmartProtocol software interface. The leftmost screenshot shows a 'Loss Testing Report' for 'OPTOKON Cable House - Znojmo' with various test parameters and a table of measured values. The middle screenshot shows a 'Data Selection' dialog box with columns for 'Position' and 'Value' and buttons for 'Add A-B', 'Add B-A', and 'Remove All'. The rightmost screenshot shows the 'SmartProtocol 1.0' main window with fields for 'Operator', 'Company', 'Trace', 'Route', 'End A', 'End B', 'Fiber Meter', 'Fiber Length', 'No. of Splices', 'Splice Loss', 'No. of Connectors', 'Connector Loss', 'No. of Passive Devices', 'Passive Device Loss', 'Wavelength', and 'Fiber Attenuation'.

DataExporter compatible



Application:

- Optical components testing
- Optical networks measurement
- Test reports creating

Ordering Code:

Multifiber multimode tester:

PM-212-MPO-MM-(16) - standard tester for 12/24 MTP/MPO connectors

-16 tester 16/32 MTP/MPO connectors